

50+ WAYS TO LEARN ABOUT JOB OPENINGS

The following is a list of 50+ resources which will help you identify employers and job leads.

I. USE PERSONAL CONTACTS

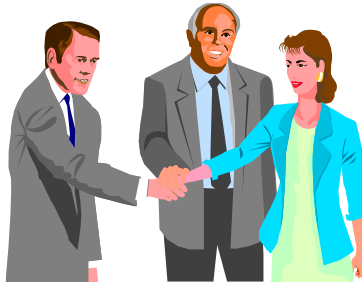


Family
Friends
Your Sports Contacts
Contacts from Volunteering

Fellow Job Seekers/ Job Clubs
Neighbors/ Former Neighbors
School/College Associates
Business Contacts

Former Teachers/Counselors
Church Members
Senior Level Contacts
Political Contacts

II. USE EMPLOYMENT RELATED CONTACTS



Others In Your Line Of Work
People You Worked With On Past Jobs
Professional Associations

Bulletin Board Job Openings
Chambers of Commerce
Union Halls

Former Employers
Informational Interviews
Mentors

III. WORK WITH SERVICES THAT PROVIDE JOB LEADS & REFERRALS

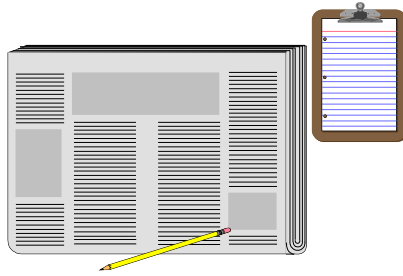


Staffing Agencies
Professional Associations
Networking Groups
Company Job Boards
Libraries/Business Libraries

Career Centers
Internet Online Networks
Executive Search Firms
Small Business Centers
Alumni Organizations

Business Development Groups
State Employment Offices
Convention Bureaus
College Placement Offices
Community Based Programs

IV. USE PUBLISHED SOURCES FOR EMPLOYER INFORMATION AND JOBS

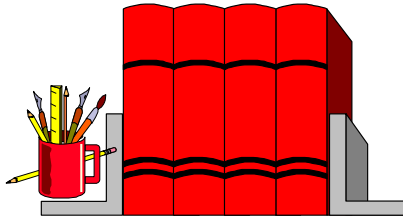


Chamber Of Commerce Directories
Job Postings
New business license lists

Newspaper Classified Ads & Articles
Civil Service Announcements
Radio & TV Announcements

Trade Magazine Ads
Telephone Hotline Lists
Yellow Pages

V. OBTAIN LEADS FROM SPECIAL REFERENCE BOOKS/RESURCES

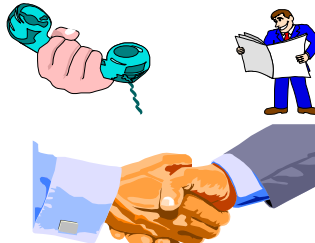


Business Directories
San Francisco Business Times
Professional/Trade Associations.

Book of Lists
Wall Street Journal

Labor Market Information Websites
Library Databases

VI. MAKE DIRECT CONTACT WITH EMPLOYERS

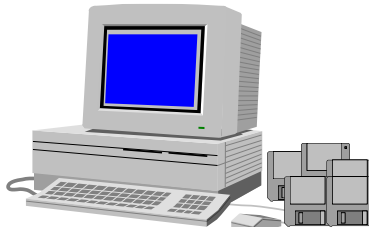


Walk In Contacts
Employer Open Houses

Place Want Ads For Yourself
Unsolicited Letters & Resumes

Telephone Job Search
Job Fairs & Recruitments

VII. USE THE INTERNET



Employer Websites
Mega Job Search Sites
LinkedIn

Websites by Career Field
Labor Market Information Links
Facebook

Info on Job Fairs /Hot Companies
Job Listings
Twitter